

# HEDIS Category II Coding Bulletin

Iowa | Medicaid • Children’s Health Insurance Program

HEDIS® (Healthcare Effectiveness Data Information Set) is a widely used set of performance measures developed and maintained by NCQA. These are used to drive improvement efforts surrounding best practices.



Reduce the number of medical records Wellpoint requests from you during the HEDIS medical record review season (January to May each year) by adding specific CPT® CAT II codes to your claims. These codes will help us identify additional information about the visit and improve the accuracy of reporting HEDIS quality measures.

Prenatal and Postpartum Care (PPC)	
Stand Alone Prenatal Visits	<p><b>0500F:</b> Initial prenatal care visit (report at first prenatal encounter with health care professional providing obstetrical care. Report also date of visit and, in a separate field, the date of the last menstrual period [LMP]) or</p> <p><b>0501F:</b> Prenatal flow sheet documented in medical record by first prenatal visit (documentation includes at minimum blood pressure, weight, urine protein, uterine size, fetal heart tones, and estimated date of delivery). Report also: date of visit and, in a separate field, the date of the last menstrual period [LMP] (Note: If reporting <b>0501F:</b> Prenatal flow sheet, it is not necessary to report 0500F Initial prenatal care visit)</p>
Stand Alone Prenatal Visits	<p><b>0502F:</b> Subsequent prenatal care visit (Prenatal). Excludes: patients who are seen for a condition unrelated to pregnancy or prenatal care (for example, an upper respiratory infection; patients seen for consultation only, not for continuing care).</p>
Postpartum Care Visit	<p><b>0503F:</b> Make sure the visit is on or between 7 and 84 days of delivery.</p>

Eye Exam for Patients with Diabetes (EED)	
Dilated retinal eye exam with interpretation by an ophthalmologist or optometrist documented and reviewed; with evidence of retinopathy (DM)	2022F
Dilated retinal eye exam with interpretation by an ophthalmologist or optometrist documented and reviewed; without evidence of retinopathy (DM)	2023F
7 standard field stereoscopic retinal photos with interpretation by an ophthalmologist or optometrist documented and reviewed; with evidence of retinopathy (DM)	2024F

HEDIS® is a registered trademark of the National Committee for Quality Assurance (NCQA).

<b>Eye Exam for Patients with Diabetes (EED)</b>	
7 standard field stereoscopic retinal photos with interpretation by an ophthalmologist or optometrist documented and reviewed; without evidence of retinopathy (DM)	2025F
Eye imaging validated to match diagnosis from 7 standard field stereoscopic retinal photos results documented and reviewed; with evidence of retinopathy (DM)	2026F
Eye imaging validated to match diagnosis from 7 standard field stereoscopic retinal photos results documented and reviewed; without evidence of retinopathy (DM)	2033F

<b>Glycemic Status Assessment for Patients with Diabetes (GSD)</b>	
Most recent hemoglobin A1c (HbA1c) level less than 7% (DM)	3044F
Most recent hemoglobin A1c level greater than 9% (DM)	3046F
Most recent hemoglobin A1c (HbA1c) level greater than or equal to 7% and less than 8% (DM)	3051F
Most recent hemoglobin A1c (HbA1c) level greater than or equal to 8% and less than or equal to 9% (DM)	3052F

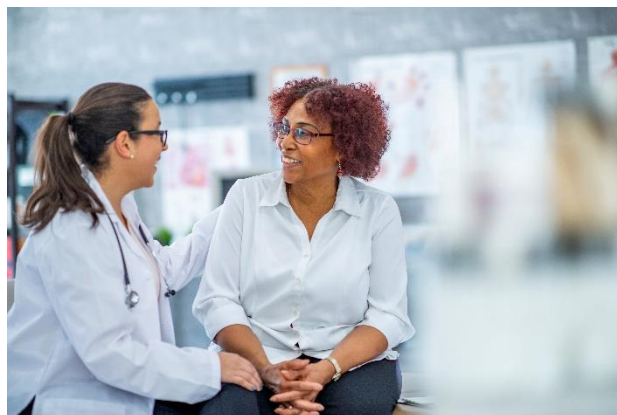
<b>Blood Pressure Control for Patients with Diabetes (BPD) Control High Blood Pressure (CBP)</b>	
Most recent diastolic blood pressure less than 80 mm Hg (HTN, CKD, CAD) (DM)	3078F
Most recent diastolic blood pressure 80-89 mm Hg (HTN, CKD, CAD) (DM)	3079F
Most recent diastolic blood pressure greater than or equal to 90 mm Hg (HTN, CKD, CAD) (DM)	3080F
Most recent systolic blood pressure less than 130 mm Hg (DM) (HTN, CKD, CAD)	3074F
Most recent systolic blood pressure 130 to 139 mm Hg (DM) (HTN, CKD, CAD)	3075F
Most recent systolic blood pressure greater than or equal to 140 mm Hg (HTN, CKD, CAD) (DM)	3077F

<b>Cardiovascular Monitoring for People with Cardiovascular Disease and Schizophrenia (SMC)</b>	
Most recent LDL-C less than 100 mg/dL (CAD) (DM)	3048F
Most recent LDL-C 100 to 129 mg/dL (CAD) (DM)	3049F
Most recent LDL-C greater than or equal to 130 mg/dL (CAD) (DM)	3050F

<b>Metabolic Monitoring for Children and Adolescents on Antipsychotics (APM-E) Diabetes Monitoring for People with Diabetes and Schizophrenia (SMD)</b>	
Most recent LDL-C less than 100 mg/dL (CAD) (DM)	3048F
Most recent LDL-C 100 to 129 mg/dL (CAD) (DM)	3049F
Most recent LDL-C greater than or equal to 130 mg/dL (CAD) (DM)	3050F
Most recent hemoglobin A1c (HbA1c) level less than 7% (DM)	3044F
Most recent hemoglobin A1c level greater than 9% (DM)	3046F
Most recent hemoglobin A1c (HbA1c) level greater than or equal to 7% and less than 8% (DM)	3051F
Most recent hemoglobin A1c (HbA1c) level greater than or equal to 8% and less than or equal to 9% (DM)	3052F

Diabetes Screening for People with Schizophrenia or Bipolar Disorder Who Are Using Antipsychotic Medications (SSD)	
Most recent hemoglobin A1c (HbA1c) level less than 7% (DM)	3044F
Most recent hemoglobin A1c level greater than 9% (DM)	3046F
Most recent hemoglobin A1c (HbA1c) level greater than or equal to 7% and less than 8% (DM)	3051F
Most recent hemoglobin A1c (HbA1c) level greater than or equal to 8% and less than or equal to 9% (DM)	3052F

The codes listed are for informational purposes only and are not intended to suggest benefit coverage or guide reimbursement. If applicable, refer to your provider contract or health plan contact for reimbursement information. For a complete list of CPT codes, go to the American Medical Association website at [ama-assn.org](http://ama-assn.org).



### Patient care opportunities

You can find patient care opportunities within the Patient360 application located on Availity Essentials Payer Spaces. To access the Patient360 application you must have the Patient360 role assignment. From Availity's home page select **Payer Spaces**, then choose the health plan from the menu. Choose the **Patient360** tile from the *Payer Space Applications* menu and complete the required information on the screen. Gaps in care are located in the *Active Alerts* section of the Member Summary.